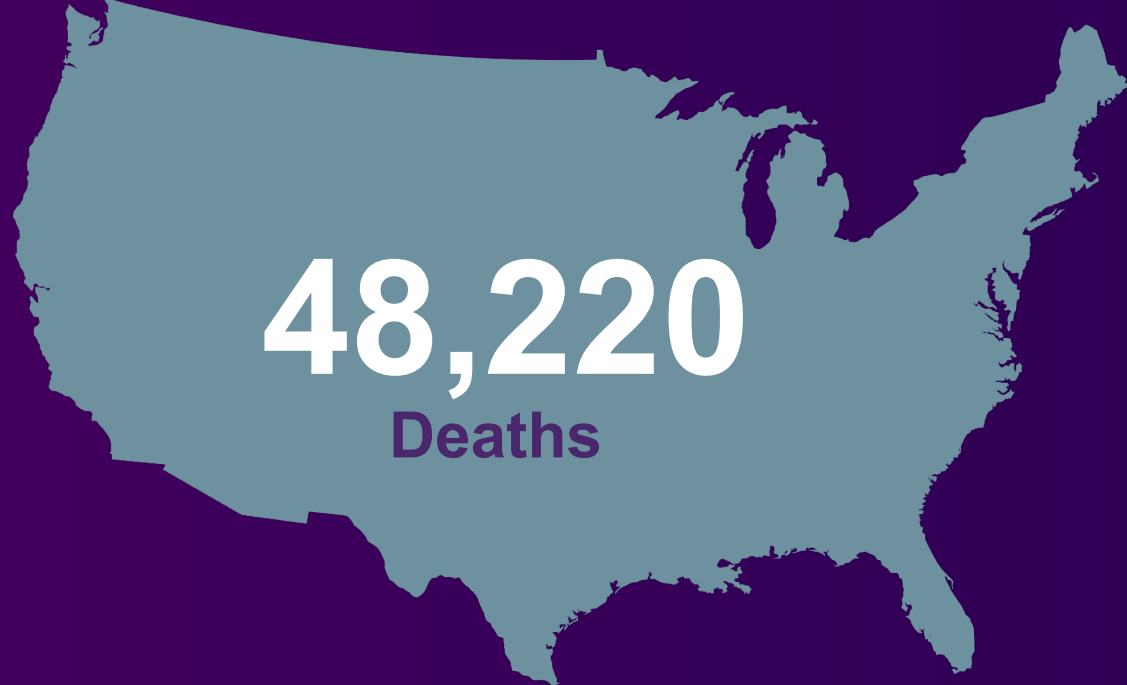


PANCREATIC CANCER



The 5-year survival rate for pancreatic cancer is

**Survival measured in
months instead of years**

10%

*American Cancer Society, Cancer Facts and Figures
1999-2021, SEER-9 Database*

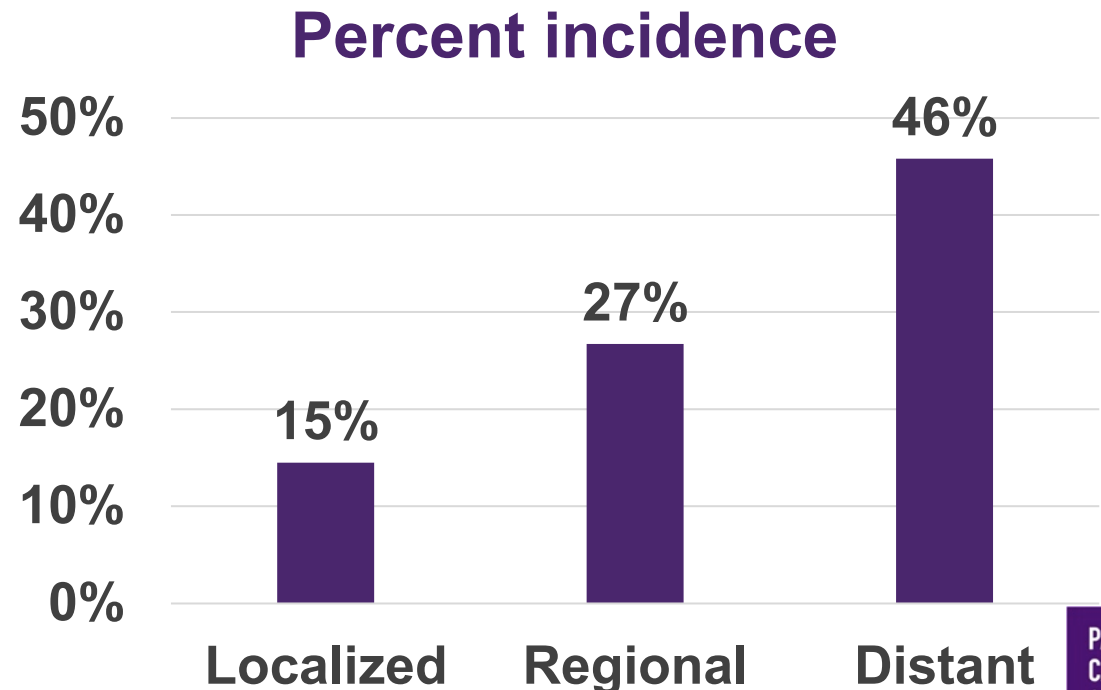
**PANCREATIC
CANCER
ACTION
NETWORK**

®

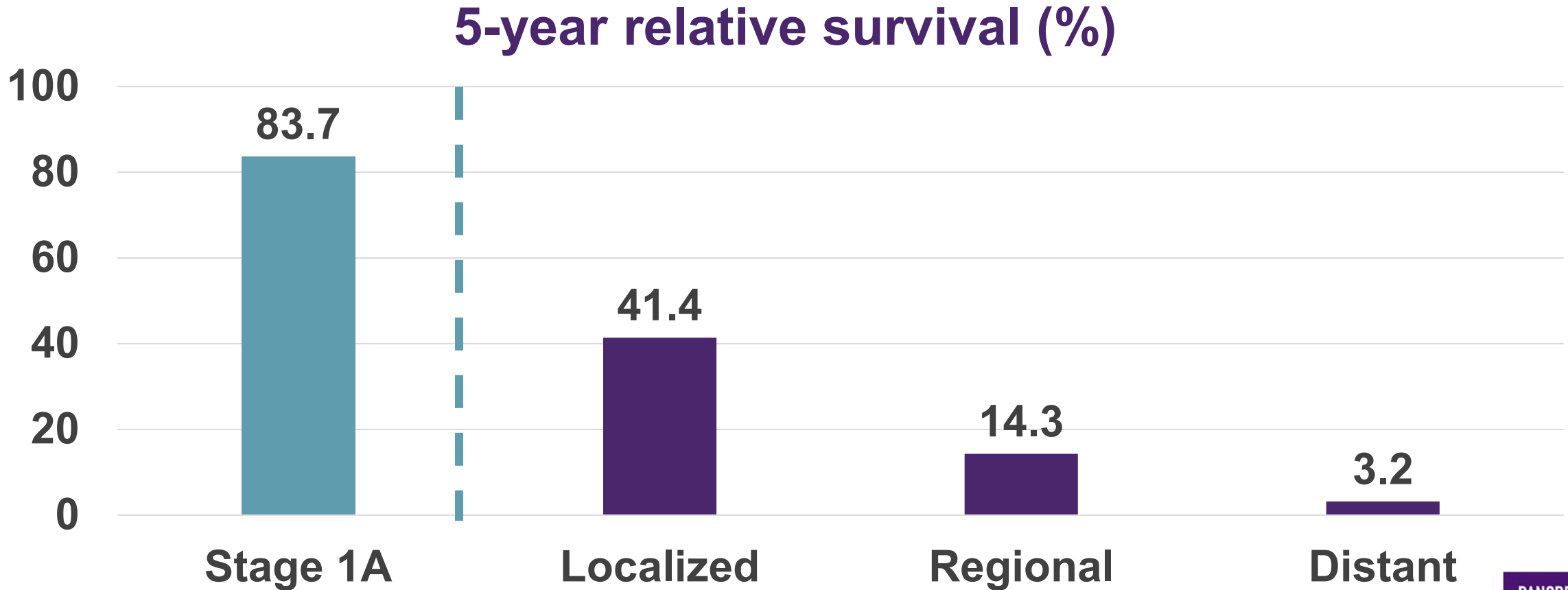
WHY IS PANCREATIC CANCER SO DEADLY?

- Detected late
 - Located deep in the body
 - Symptoms are vague and common
 - Back ache
 - Indigestion
- Metastasizes early

Only 15% are diagnosed with early-stage disease and eligible for surgery

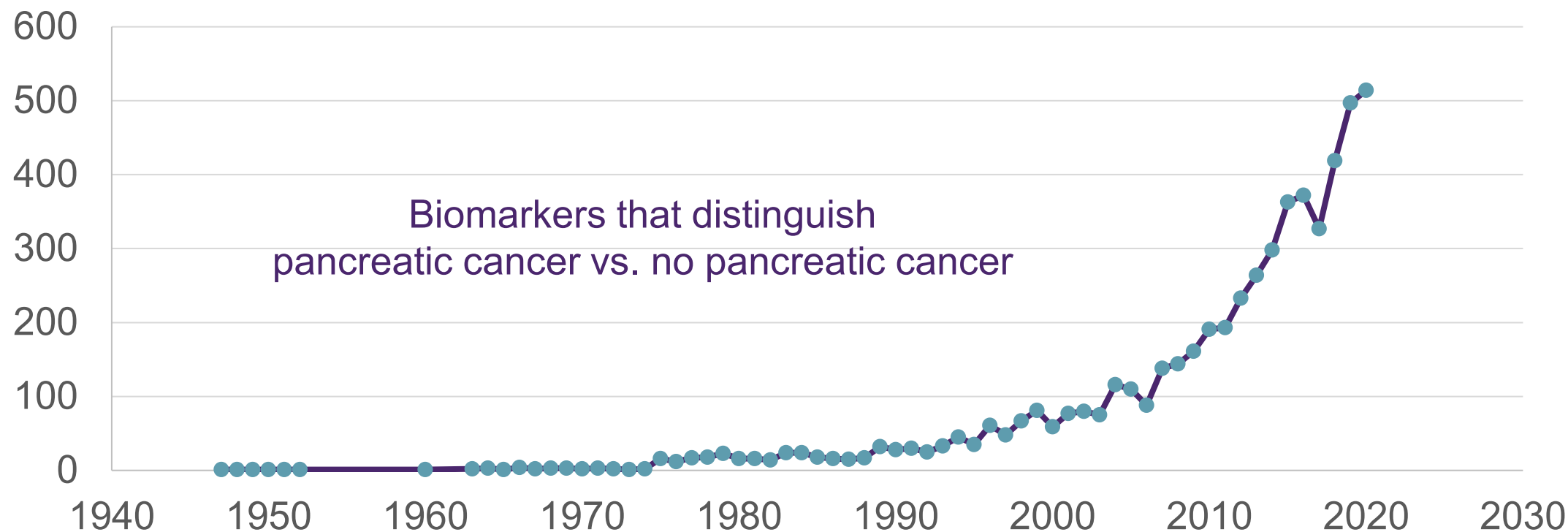


EARLIER DETECTION IN PANCREATIC CANCER DRAMATICALLY IMPROVES SURVIVAL



SCIENTIFIC PROGRESS TOWARD AN EARLY DETECTION TEST FOR PANCREATIC CANCER

Publications on pancreatic cancer early detection



BOTTLENECK FOR PANCREATIC CANCER SCREENING

Challenge for Validation and Implementation

13.1 pancreatic cancer cases in 100,000 Americans

.01% = screen 10,000 to find 1 case



Lung 55.4
Liver 9.2
Esophagus 4.3
Stomach 7.5
Brain cancer 6.5
Ovarian cancer 11.6
etc.

'Deadliest'
or
'Recalcitrant'
Cancers

1% = screen 10,000 to find 100 cases

Multi-cancer Early Detection



Age
Genetic predisposition
New-onset diabetes

1% = screen 100 to find 1 case

High-risk individuals

“I dream of a day ...when a pancreatic cancer patient is diagnosed early, and it’s not based on lucky timing but rather, an early detection tool that brings about survival...”

MATT WILSON
9-year pancreatic cancer survivor

