

JOINT CONFERENCE

Dynamic Competition and Public Policy: Reflecting on the Path Forward for Schumpeterian Antitrust

Hosted by:



Regulatory
Studies Center

THE GEORGE WASHINGTON UNIVERSITY

APRIL 14, 2022

8:30 AM - 5:45 PM

Information Technology and Innovation Foundation
700 K Street NW, Suite 600, Washington, DC 20001

#DynamicAntitrust

EVENT SUMMARY

Twenty years ago, Jerry Ellig edited a book titled [Dynamic Competition and Public Policy: Technology, Innovation, and Antitrust Issues](#).

With antitrust enforcement now a subject of intense interest among policymakers, it is time to pay tribute to Ellig's pioneering work on dynamic competition, reflect on what we have learned since the book's publication in 2001, and consider how to advance the much-needed Schumpeterian approach to competition.

Please join ITIF's Schumpeter Project on Competition Policy and the George Washington University's Regulatory Studies Center for a special conference where antitrust scholars and practitioners will gather to reflect on the path forward for the Schumpeterian approach to antitrust and celebrate Ellig's seminal work.

AGENDA

8:30 - 9:00 am.....Opening Remarks

9:00 - 9:30 am.....Keynote

9:30 - 11:00 am.....Panel: Dynamic Competition and the FTC's Rulemaking Authority

11:15 - 12:45 pm.....Panel: A Dynamic Approach to Mergers

12:45 - 2:00 pm.....Lunch

2:00 - 3:30 pm.....Panel: Innovation, IP, and Antitrust Tools Reconsidered

3:45 - 5:15 pm.....Panel: Precautionary Antitrust v. Dynamic Antitrust

5:15 - 5:45 pm.....Keynote

5:45 - 7:00 pm.....Reception

KEYNOTE SPEAKERS:



Patty Brink

- Senior Counsel, International and Intergovernmental Engagement, Antitrust Division, U.S. Department of Justice



Mark Meador

- Deputy Chief Counsel for Antitrust and Competition Policy, Senate Judiciary Committee

Join the conversation online!



#DynamicAntitrust


PANEL ONE:

Dynamic Competition and the FTC's Rulemaking Authority



Maureen Ohlhausen

- Former FTC Commissioner
- Section Chair - Antitrust & Competition Law, Baker Botts

 [@m_ohlhausen](https://twitter.com/m_ohlhausen)



Howard Beales

- Professor Emeritus of Strategic Management & Public Policy, George Washington University



Richard Pierce

- Lyle T. Alverson Professor of Law, George Washington University

 [@richardjpierce](https://twitter.com/richardjpierce)



Aurelien Portuese


- Director, Antitrust & Innovation Policy, ITIF

 [@aurelienportues](https://twitter.com/aurelienportues)



Susan Dudley

- Director, GW Regulatory Studies Center
- Distinguished Professor of Practice, GW Trachtenberg School

 [@susanedudley](https://twitter.com/susanedudley)

PANEL TWO:

A Dynamic Approach to Mergers



Diana Moss

- President, American Antitrust Institute



Ginger Zhe Jin

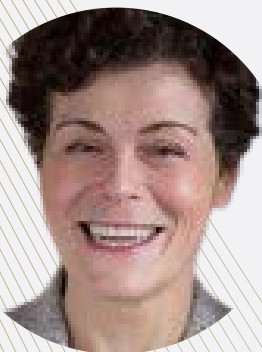
- Professor of Economics, University of Maryland-College Park



Julie Carlson

- Associate Director for Antitrust & Innovation Policy, ITIF

 [@julieinannap](https://twitter.com/julieinannap)



Lisa Kimmel

- Senior Counsel, Crowell & Moring's Antitrust & Competition Group

 [@lisakimmeldc](https://twitter.com/lisakimmeldc)



Christina DePasquale

- Associate Professor of Practice, Economics, Johns Hopkins University



Bryce Chinault

- Communications & Outreach Manager, GW Regulatory Studies Center

 [@brycethenoble](https://twitter.com/brycethenoble)

PANEL THREE:

Innovation, IP, and Antitrust Tools Reconsidered



Suzanne Munck of
Rosenschold

- Counsel, Antitrust & Competition, Davis Polk



Chris Stomberg

- Director, NERA Economic Consulting



Megan Browdie

- Partner, Cooley



Richard Langlois

- Professor of Economics, University of Connecticut



Julie Carlson

- Associate Director for Antitrust & Innovation Policy, ITIF

 [@julieinannap](https://twitter.com/julieinannap)

PANEL FOUR:

Precautionary Antitrust v. Dynamic Antitrust



Robert Lande

- Venable Professor of Law, University of Baltimore



Rosa Abrantes-Metz

- Principal, Global Antitrust & Competition, Brattle



Fiona Schaeffer

- Partner, Milbank



Anna Meyendorff

- Partner, Bates White



Aurelien Portuese

- Director, Antitrust and Innovation Policy, ITIF

 [@aurelienportues](https://twitter.com/aurelienportues)


ABOUT THE HOSTS



Regulatory Studies Center

THE GEORGE WASHINGTON UNIVERSITY

ITIF's Schumpeter Project on Competition Policy's mission is to advance dynamic competition policy in which innovation is a central concern for antitrust enforcement, not a secondary consideration. The Schumpeter Project conducts legal and economic research, publishes actionable policy analysis, organizes high-level discussions, and engages with policymakers to rethink the relationship between competition and innovation for the benefit of consumers, innovative companies, the economy, and society.

 [@ITIFdc](https://twitter.com/ITIFdc)  itif.org/issues/regulation-and-antitrust

The George Washington University Regulatory Studies Center's mission is to improve regulatory policy through research, education, and outreach. The Center is a leading source for applied scholarship in regulatory issues, and a training ground for anyone who wants to understand the effects of regulation and ensure that regulatory policies are designed in the public interest. The Center is housed within the Trachtenberg School of Public Policy and Public Administration, which is consistently ranked among the nation's top policy schools, and attracts high achieving students interested in careers in public policy. The Center is a hub for academic institutions around the country, and brings fresh ideas and analysis to policy makers in Washington.

 [@RegStudies](https://twitter.com/RegStudies)  regulatorystudies.columbian.gwu.edu/